

## CLOVERMIST OPTIONS

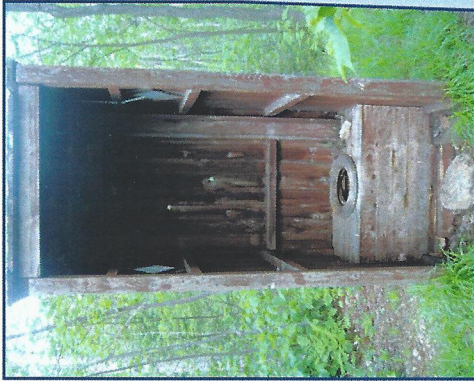
- Standard Vault Toilet
- Single Vault Toilet Plus Privacy Screen
- Double Vault Toilet
- Double Vault Toilet with Chase

## OPTIONS

- Chain Door Strap
- Do Not Throw Sign
- SS Double Coat Hook
- Plastic Urinal
- Waste Receptacle
- Raptor Vent Screen
- Solar Light Kit
- Gojo Purell Hand Sanitizer Dispenser

## OUR GUARANTEE

Boom Concrete, Inc. precast vault toilets, when in-stalled in accordance with the manufacturer's instructions, are warranted against defective materials and/or workmanship for a period of 20 years from date of delivery. All non-concrete components such as windows, vents, vault toilet risers, grab bars, toilet paper dispensers, doors, locksets, dead bolts, door sweep, door stops, coat hooks, signs and vault vent pipes will carry a one year warranty from date of delivery. As an option the double-walled vault with plastic liner will include a water tightness warranty for a period of seven years from date of purchase.



## Replace This with a Boom Precast Concrete Vault Toilet

### PLACEMENT

- Municipal Parks / Rodeo Grounds
- Softball & Football Fields / Golf Courses
- State Parks / Recreation Areas
- Tourist Sites / Campgrounds
- Game Fish & Parks Areas

### CONTACT

Boom Concrete, Inc.  
220 Girard Ave.  
PO Box 437  
Newell, SD 57760

Phone: 605-456-2600

Toll Free: 800-464-2600

Fax: 605-456-6060

Email: [lfox@boomcon.com](mailto:lfox@boomcon.com)

Web: [www.boomcon.com](http://www.boomcon.com)

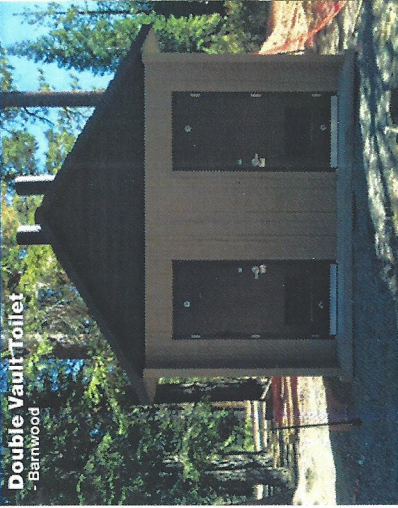


## Clovermist Vault Toilets

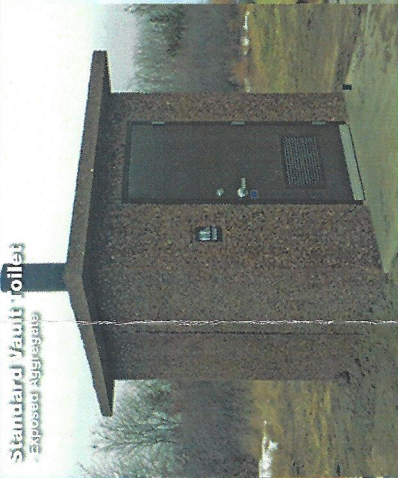
Quality Concrete Products



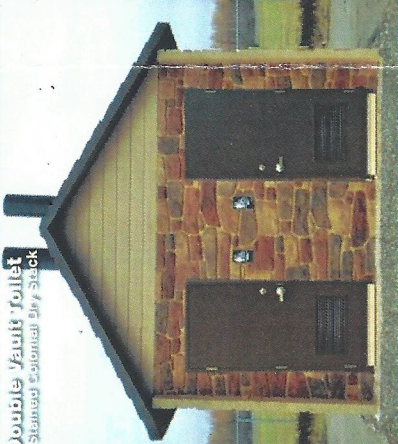
[www.BoomCon.com](http://www.BoomCon.com)



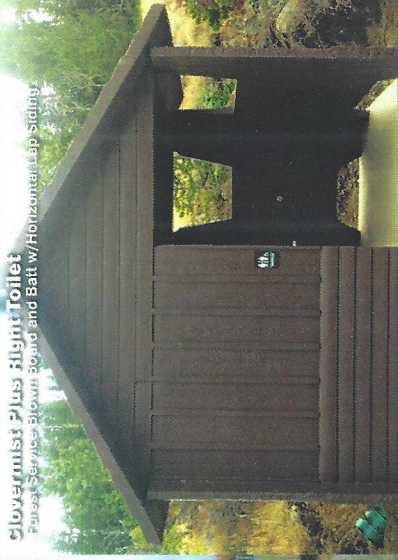
Double Vault Toilet  
- Barnwood



Standard Vault Toilet  
- Exposed Aggregate



Double Vault Toilet  
- Stained Colonial Dry Stack



Clovermist Plus Vault Toilet  
- Forest Service Brown Board and Batt w/ Horizontal Lap Siding

## Why Choose a Concrete Clovermist Vault Toilet?

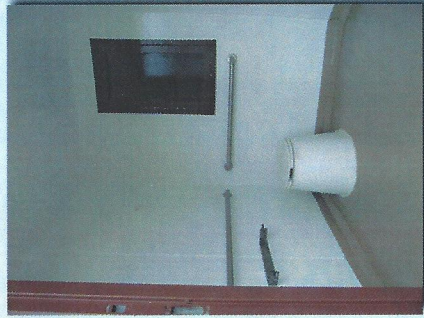
### VANDAL RESISTANCE

With the ever-increasing rise in vandalism and the costs incurred because of it, more and more of our customers are realizing the need to "harden" their public areas with a BOOM Clovermist Vault Toilet.

### ADA COMPLIANCE

BOOM Vault Toilets are designed to comply with ADA accessibility requirements for persons with disabilities.

The comfort station is equipped with two grab bars, a handicap toilet riser, accessible doors, and 60" turning space to accommodate a wheelchair.



### ESTHETICS OR VISUAL DESIGN

Most BOOM Vault Toilets are built standard with precast barnwood walls. The Standard Boom Vault Toilet is built standard with precast exposed aggregate walls for a pleasing look that goes with most landscapes. Optional wall textures are available in Colonial Dry Stack, Barnwood, Board & Batt, Lap Siding and Stucco. The comfort station comes with a smooth, white epoxy interior for a clean look.

### IMPROVED "SWEET SMELLING TECHNOLOGY"

The US Forest Service developed the "Sweet Smelling Technology" which is a unique design for controlling odors in vault toilets. BOOM CONCRETE has enhanced these design elements in order to greatly improve the concepts of "Sweet Smelling Technology" which has made the BOOM Clovermist completely odor free.

The air flow is through the door ventilator, down the riser into the sludge holding tank, up the heated vent to a solar heat chamber, built into the roof, and then is pulled out of the comfort station via the one foot diameter stack on top. This system uses Mother Nature's natural powers of the sun and wind to keep the positive airflow and odor moving in the right direction, thus eliminating interior odors.

### WILL NOT RUST OR ROT

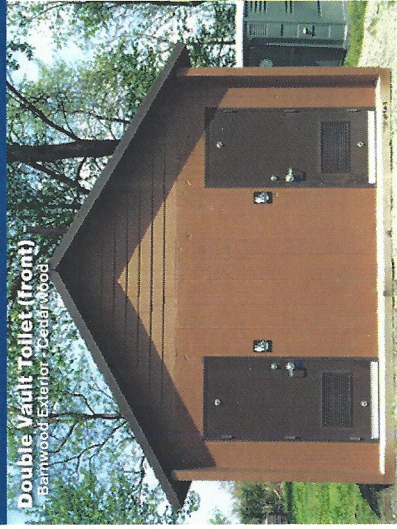
Unlike wood or metal structures, BOOM Vault Toilets are made with durable precast concrete which will not rust or rot, therefore giving long-term service.

### LOWER MAINTENANCE COSTS

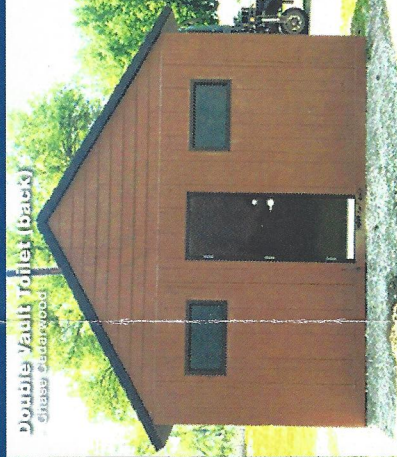
The concrete structure of BOOM Vault Toilets, allows for them to be hosed out and thoroughly cleaned.

### COST EFFECTIVE

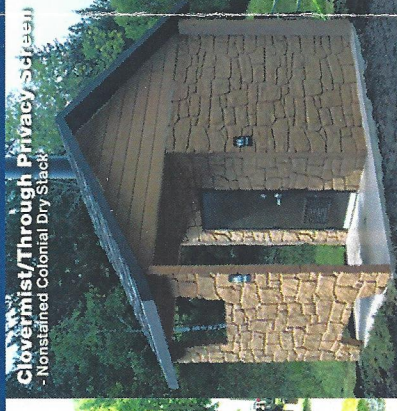
BOOM Vault Toilets are precast concrete structures. With precast concrete there is less likelihood of damage or decay, therefore less replacement costs.



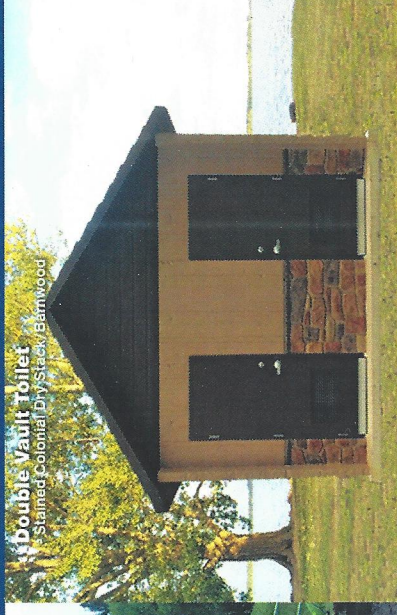
Double Vault Toilet (front)  
- Barnwood Exterior, Cedar Roof



Double Vault Toilet (back)  
- Barnwood



Clovermist/Through Privacy Screen  
- Nonstained Colonial Dry Stack



Double Vault Toilet  
- Stained Colonial Dry Stack, Barnwood